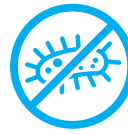


# HIGH SPIN HYGIENIC BARRIER WASHER EXTRACTORS



**MB  
RANGE**

MB 90	MB 110	MB 140	MB 180
90KG 198LB	110KG 242LB	140KG 309LB	180KG 397LB



HYGIENIC  
SOLUTION



LARGE DOOR  
OPENING



EASY  
OPERATION

OPTILOAD

TRACE-TECH

POWERWASH

Graphitronic

supereco  
washing programmes

## FEATURES

- Freestanding, high spin
- Stainless steel cabinet
- Stainless steel drum and tub
- Oversized frame, bearings and drum
- Large door opening for easy loading and unloading
- Large drain valve (Ø 126 mm)
- Easy access to all parts
- Frequency controlled motor
- Perforated lifting ribs: more mechanical action, lower water consumption
- Standard Y-pocket (3 pockets) drum on MB1100, MB1400, MB1800
- Standard Pullman (2 pockets) drum on MB90
- Eco-friendly washing programs - significantly reduces water and electricity consumption
- Soap dispenser with 5 removable compartments (10 compartments on MB1800)
- Automatic door positioning

## OPTIONS

- Liquid soap pumps
- Drum with 2 pockets on MB1100, with 3 pockets on MB90
- Water sample tap

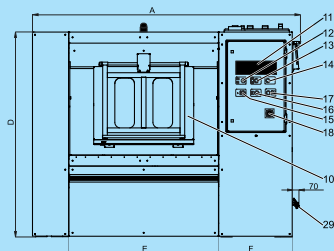
- Light and sound signalisation of end of washer cycle
- Second display
- Insulation for energy, heat and noise reduction

## XCONTROL FLEX PLUS PLATFORM

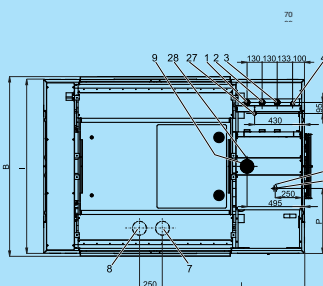
- 7", full colour touch screen display with swipe function: very intuitive for users
- User-friendly screen with operating instructions built in as part of the control
- Complete control content available in 34 languages
- Wireless communication enabling programming
- Automated service reminders remind users to maintenance tasks
- i-Trace laundry management software for a perfect control of your laundry installation

TYPE		MB90	MB110	MB140	MB180
<b>CAPACITY</b>					
Drum volume	l	900	1100	1400	1800
Capacity 1:09	kg (lb)	100/220	122/270	155.5/243	200/441
Capacity 1:10	kg (lb)	90/198	110/242	140/309	180/397
Drum diameter	mm	Ø 1000	Ø 1100	Ø 1200	Ø 1300
<b>POCKETS</b>					
		Standard 2 Optional 3	Standard 3 Optional 2	Standard 3 Optional 2	Standard -
<b>MOTOR</b>					
Frequency controlled		standard	standard	standard	standard
<b>DRUM SPEED</b>					
Wash speed	rpm	36	35	33	36
Spin speed	rpm	800	754	720	695
<b>G-Factor</b>					
		360	350	350	350
<b>CABINET</b>					
Stainless steel AISI 304		standard	standard	standard	standard
<b>DRUM</b>					
Stainless steel AISI 304		standard	standard	standard	standard
<b>HEATING</b>					
Electrical heating	kW	54	72	72	-
Steam heating	bar	6-8	6-8	6-8	6-8
<b>CONNECTION</b>					
Electrical					
Water inlet	inch	3x1,5" + 1x3/4"	3x1,5" + 1x3/4"	3x1,5" + 1x3/4"	3x1,5" + 1x1"
Steam inlet	inch	1"	1"	1"	1"
Compressed air inlet	mm	Ø 10	Ø 10	Ø 10	Ø 10
Drain	mm	Ø 126	Ø 126	Ø 126	Ø 126
<b>DIMENSIONS H×W×D</b>					
Net weight	kg	2810	2990	3550	4990
<b>TRANSPORT DATA</b>					
Volume (packed)	m <sup>3</sup>	8,1	8,7	10,8	12,3
Packed H×W×D	mm	1985x2355x1740	2080x2400x1740	2250x2485x1940	2265x2665x2040
Gross weight	kg	2970	3150	3760	5310

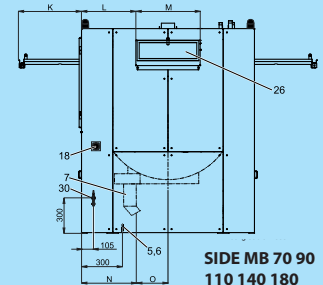
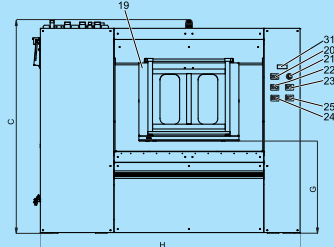
FRONT MB 70 90 110 140 180



TOP MB 70 90 110 140 180



BACK MB 70 90 110 140 180



SIDE MB 70 90 110 140 180

1. Hard cold water inlet
2. Soft cold water inlet
3. Hot water inlet
4. Steam inlet
5. Supply of pressure air
6. Power supply
7. Main drainage valve
8. Recycling drainage valve
9. Venting of the machine
10. Door of loading (dirty side)
11. Programmer
12. Change-over switch
13. Signal of machine running (+ operating air pressure)
14. Central stop
15. Button of door unlocking
16. Button of drum positioning
17. Button of door locking
18. Main switch
19. Door of unloading (clean side)
20. Signal of loading
21. Central stop
22. Button of door locking
23. Button of activation of loading side
24. Button of door unlocking
25. Button of drum positioning
26. Soap hoppers
27. Soft cold water inlet into soap hoppers