

# HIGHLY EFFICIENT SOFT MOUNTED WASHER EXTRACTORS



**FX  
RANGE**

FX350	FX450	FX600
35KG 77LB	45KG 99LB	60KG 132LB



## FEATURES

- Freestanding, high spin
- Patented Cascade Drum™
- Stainless steel drum and tub
- 2x large drain valves (Ø 76 mm)
- Easy Soap™ - liquid soaps connection
- Large door opening for easy loading/unloading
- Ergonomic height of door enables easy access with trolleys
- RS485 plug (on the back panel)
- User Friendly control position regardless the user's height
- Bumper (front side protection)
- Soap hopper

## XCONTROL FLEX PLUS PLATFORM

- 7" Touch intuitive programmer
- Available in 34 languages
- Factory built wifi for programming and updating
- Service alerts for easy maintenance
- Fully programmable
- 20 preset programs, up to 99 in memory
- i-Trace laundry management software for a perfect control of your laundry installation.

## OPTIONS

- Liquid soap pumps
- Recycle drain valve
- Insulation for energy and heat & noise reduction
- Extra signalization (orange light + sound)
- Steam/electric heating version
- Air operated water inlets
- Water tap
- 3rd water inlet, high inlets capacity
- Automatic weighing system through 4 weighing cells
- Tilting system: assists operators during loading & unloading



XControl FLEX PLUS approach, program, and cycle screens



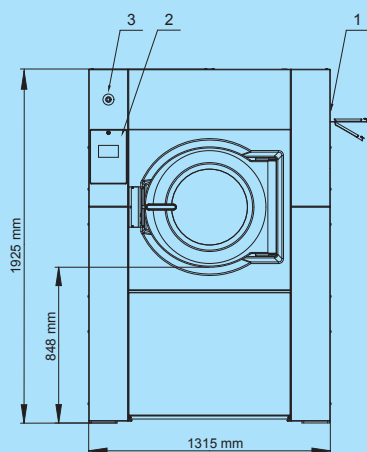
ERGONOMIC CONSTRUCTION TOUCH SCREEN CONTROLS LOW WATER AND ENERGY CONSUMPTION

\*Consult your sales representative for availability

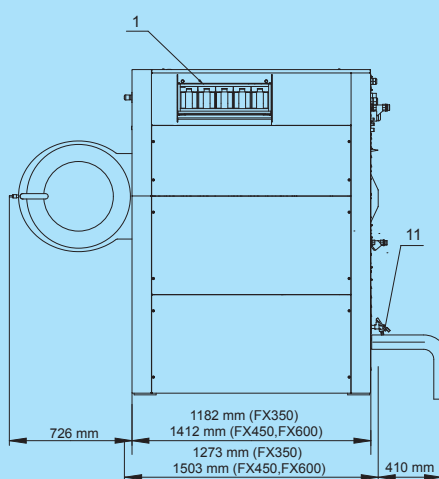
**GET AHEAD** IN LAUNDRY

TYPE		FX350	FX450	FX600
<b>INNER DRUM</b>				
Capacity 1:09	kg (lb)	39 (86)	50 (110)	67 (148)
Capacity 1:10	kg (lb)	35 (77)	45 (99)	60 (132)
Volume	litres	351	452	601
Diameter	mm	914	914	1035
<b>DRUM SPEED</b>				
Wash speed (max)	rpm	38	38	36
Extraction speed (max)	rpm	839	839	788
<b>G-FACTOR</b>				
		360	360	360
<b>HEATING</b>				
Electricity	kW	24	36	54
Steam	bar	3-8	3-8	3-8
Hot water	°C	90	90	90
Sound pressure level	dB (A)	<75	<75	<75
Water valves connection	BSP	1"	1"	1"
Water pressure	kPa	100-800	100-800	100-800
Rec. water pressure	kPa	300-500	300-500	300-500
Water inlet capacity (at 8 bar)	l/min	518	518	518
Drain valve	outer Ø	mm	2x76	2x76
Flow amount with drain valve	l/min	2x 210	2x 210	2x 210
Steam valve connection	BSP	3/4"	3/4"	3/4"
Steam pressure	kPa	300-800	300-800	300-800
<b>DIMENSIONS</b>				
Size H×W×D	mm	1925x1315x1270	1925x1315x1502	1925x1315x1502
Net weight	kg	1010	1350	1500
<b>TRANSPORT DATA</b>				
Packed H×W×D	mm	2125x1425x1470	2125x1425x1700	2125x1425x1700
Gross weight	kg	1170	1490	1640

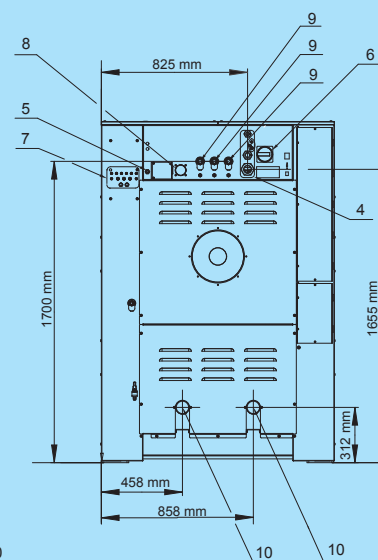
Front side



Left side



Rear side



1. Soap hopper
2. Keyboard
3. Emergency stop
4. Electrical connection

5. Electrical connection to liquid soap
6. Main switch
7. Liquid soap pump connections

8. Air vent tub
9. Water connection
10. Drain valve
11. Water Sample Tap