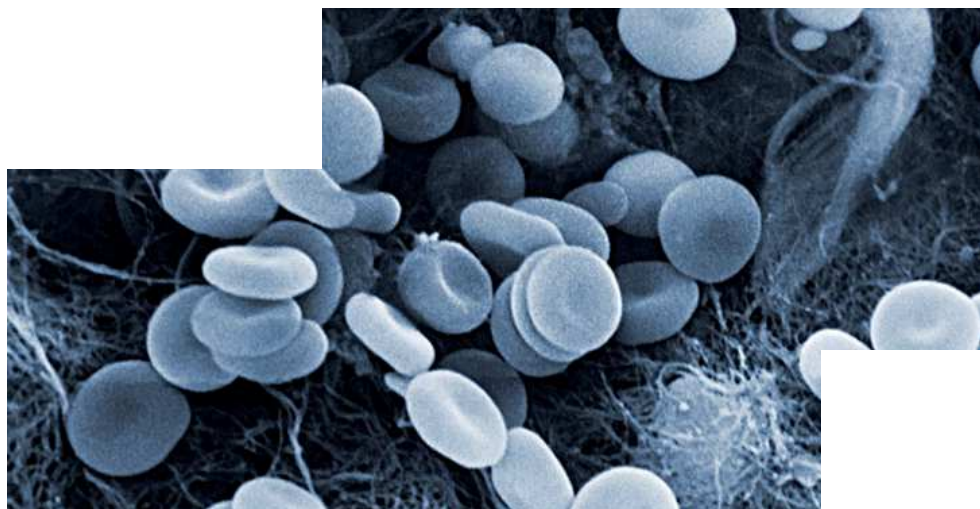




primus®

GET AHEAD IN

# LAUNDRY HYGIENE EXPERTISE





## EXPERTS IN HYGIENE

---

# PRIMUS OFFERS YOU THE BEST DEFENSE

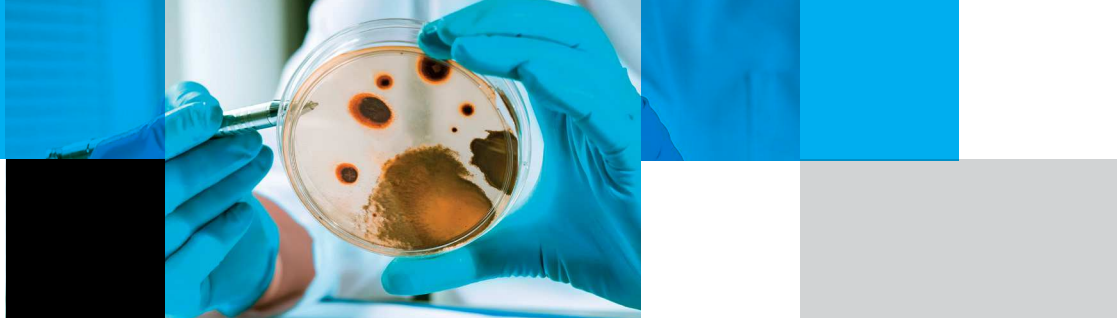
### STUDIES SHOW THAT LINEN IS A MAJOR FACTOR FOR THE TRANSFER OF INFECTIONS AND SUPERBUGS

- 10 to 15% of hospital-acquired infections (leading to an average extra 4-5 days in hospital, and in extreme cases, the death of the patient) are due to unsatisfactory linen hygiene.
- The elderly and children are more at risk to infection due to their less efficient immune systems.
- Operators must have total care management of the laundry to maintain a high level of hygiene in their global production, so ensuring that product is free of certain bacteria (ie: Staphylococcus aureus, Salmonella, Listeria, etc...).

---

AGAINST CROSS CONTAMINATION OF  
SUPERBUGS WITHIN YOUR LAUNDRY

---



# STOP CROSS CONTAMINATION NOW!

This is such an important subject that Primus partnered with two microbiological institutes to test under real conditions the recontamination risks in a laundry environment.

The tests were made in a laundry using Primus barrier washers with a physical separation of the soiled and clean sides of the laundry rooms. The establishments are certified to be in conformity with RABC\* by an external organisation. (less 12 CFU/25cm<sup>2</sup>).

|             | Type Hand | Hands (CFU/hand)  | Air (CFU/m <sup>3</sup> )    | Trolleys (CFU/25 cm <sup>2</sup> ) |
|-------------|-----------|-------------------|------------------------------|------------------------------------|
| SOILED AREA | Total     | 1x10 <sup>3</sup> | NM* (>>3.8x10 <sup>2</sup> ) | 103                                |
|             | Fungi     | 28                | NM* (>>1.6x10 <sup>2</sup> ) | 3                                  |
| CLEAN AREA  | Total     | >397              | 2x10 <sup>2</sup>            | 2,25                               |
|             | Fungi     | 8                 | 50                           | 2,25                               |

\* NM: No Measurable / too many germs

\*\* CFU - colony-forming unit is a measure of viable bacterial numbers

- The largest amount of germs are transmitted by hand
- Air is an important vector of propagation of micro-organisms
- Surfaces are a main vehicle of germ transmission too



Contamination of a hand with glove in dirty side



Contamination of a hand without glove in clean side

The RABC is an abbreviation of Risk, Analysis, Biocontamination and Control. RABC is a Quality Management System. The RABC system is implemented to avoid microbiological contamination of persons and products by laundry operation and to provide defined microbiological quality of laundered goods. The implemented RABC-System is controlled by external experts on a yearly basis.

---

**PRIMUS OFFERS YOU**  
 THE BEST DEFENSE AGAINST CROSS  
 CONTAMINATION OF SUPERBUGS  
 WITHIN YOUR LAUNDRY

---

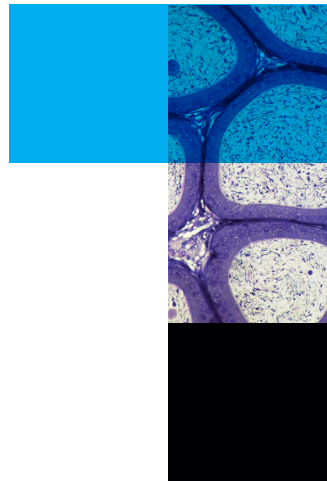


# A SOLID FOUNDATION FOR YOUR LAUNDRY HYGIENE

Primus has developed a full range of barrier washers in order to simplify and to optimize the setting up of your laundry offering the best protection for employees, patients and the best prevention for the spreading of micro-organisms and superbugs.

**WHEN ADOPTING THE PRIMUS HYGIENIC SOLUTION,  
THE OPERATION OF YOUR LAUNDRY CONFORMS WITH  
BEST HYGIENIC PRACTICES:**

- Respect RABC for “walk forward” principles for best laundry process.
- Physical wall separates the laundry in two parts: soiled area and clean area.
- No risk of contact or crossing between soiled and clean linen.
- As an option, separate atmosphere pressures can be created between clean and soiled areas to prevent airborne re-contamination.
- Specific “hygienic” programs for decontamination of laundry.
- Offers the best protection against the spreading of infections.
- Guarantees your investment in the future by anticipating the next regulations.
- Secure traceability through Trace-Tech, Primus laundry management system.



 TRACE-TECH®

# HOW PRIMUS HELPS YOUR CARE HOME GET AHEAD

In-house laundry gives you complete control over hygiene. It's faster, safer and more cost-effective than transporting it to a third party to process.

## SECURE LOAD TRACKING

Trace-Tech digital tracking gives visibility into each variable of the laundry process for traceability.

Better management = Greater safety, more control



## USER FRIENDLY

Primus laundry management processes do all the hard thinking. Plus we provide complete training programs for every user.

Minimum training = Lower costs, more control, better efficiency

## ECO-FRIENDLY

We aim to meet or exceed stringent water and energy consumption regulations and standards.

Using fewer resources = Lower costs, higher efficiency



## BARRIER HYGIENE\*

Your Primus laundry completely separates soiled from clean which helps prevent the spread of infectious diseases like colds and flu.

Maximum hygiene = Healthier residents, higher satisfaction

## FAST TURNAROUND TIMES

Our powerful, smart equipment cuts laundry time. Sensors and load analysis optimize processes and resource use.

Maximum efficiency = Lower costs, more control, better service

## SPACE SAVING EFFICIENCY

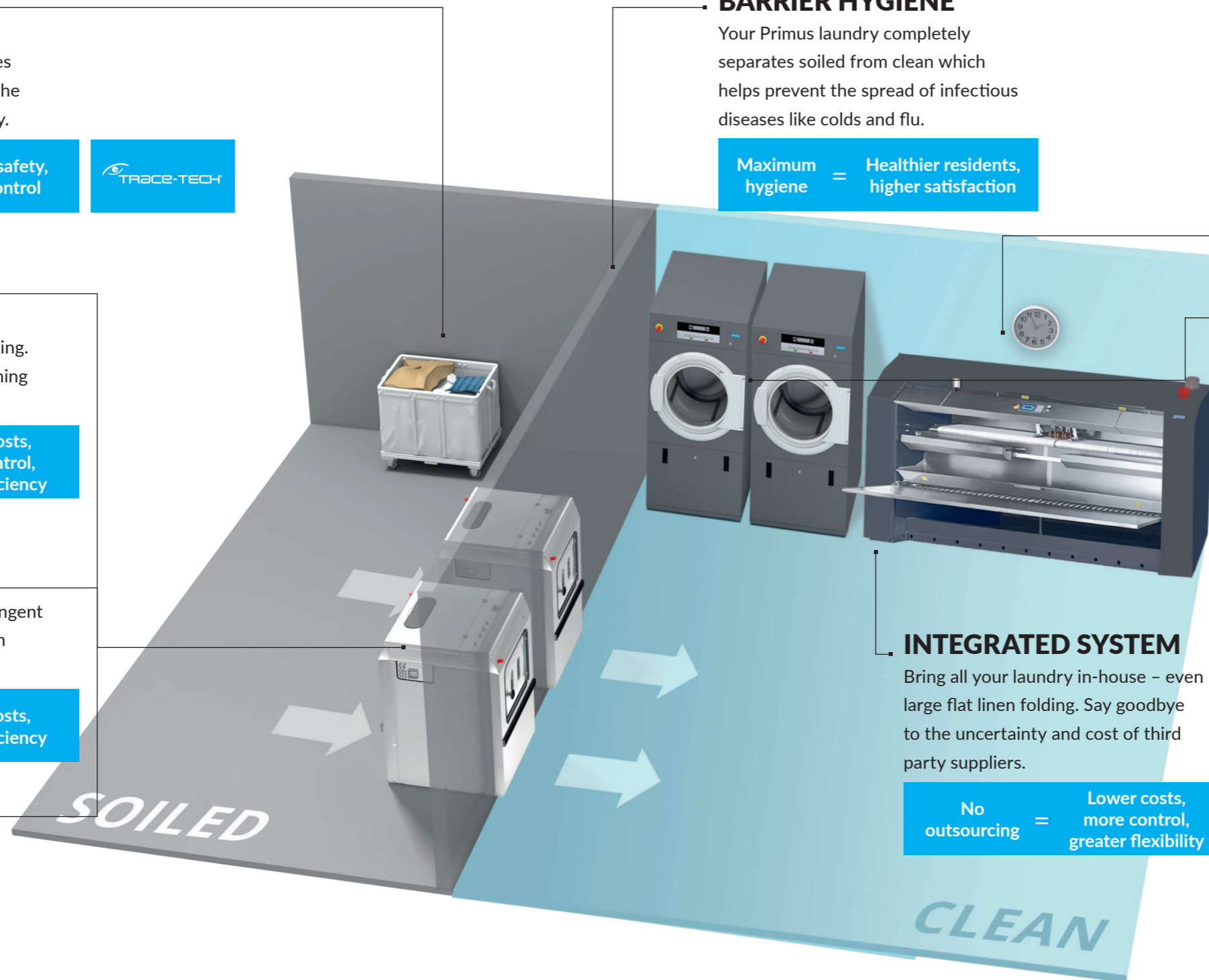
Primus equipment comes in a wide range of capacity and footprints matching your needs. Linens last longer with Primus moisture control and overdry sensor protection.

Save space, more capacity = Lower costs with more efficiency

## INTEGRATED SYSTEM

Bring all your laundry in-house – even large flat linen folding. Say goodbye to the uncertainty and cost of third party suppliers.

No outsourcing = Lower costs, more control, greater flexibility





## PRIMUS IS ALSO INNOVATIVE AND PARTICULARLY IN:



### QUALITY

Highest quality components and raw material in the manufacturing process ensure a long life span and a safe investment.



### ERGONOMICS

A complete range of pass through barrier washers, including Pullman type, with large door openings for easy loading and unloading.



### ENVIRONMENT

Our dedicated engineers work continually to reduce water and electrical consumption and increase the efficiency of our machines. Water recycling is an option. Advanced waste management is applied in our production process.



### SIMPLICITY

Our easy to use control allows technicians to have a standardized programming set-up to ensure the best technical support.



### CHOICE

Large capacity range allows a tailor made solution to suit your budget and operational requirements.



### TRACEABILITY

Connected to Trace-Tech® management software, barrier washers allow full quality control by providing records and statistics for each wash. All data are stored and can be retrieved for creating operations reports.

## AND REGULATIONS RECOMMENDATIONS

This European Standard describes a Risk Analysis and Biocontamination Control (RABC) system to enable laundries to continuously assure the microbiological quality of the laundered textiles. (The admitted value for clean linen is less 12 CFU / 25 cm<sup>2</sup>). This European Standard is compatible and may be easily integrated into an international recognised quality global management system. The norm specifies that *“The management shall identify, provide and maintain the facilities it needs to achieve the control of biocontamination.”*

---

NF EN 14065 NORM - “LAUNDRY PROCESSED  
TEXTILES - BIO-CONTAMINATION CONTROL SYSTEM”

---

# WHAT ARE THE EU REGULATION AND STANDARDS?

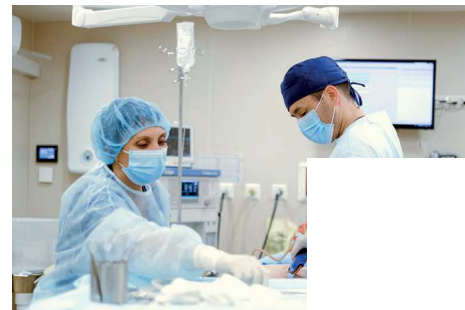
## HEALTHCARE

---

BP G 07-223:2004 REFERENTIAL: LAUNDRY PROCESSED TEXTILES

### Best laundry practice:

- A physical separation of the room between soiled area and clean area is recommended while using barrier washers-extractors.
- Hand washing is always necessary following a described procedure.
- The “walk forward” concept applies.



## NURSING HOMES

---

NF X50-058 NORM - SERVICE LEVEL

### Best service level:

All services offered to patients should be best in class and the safest for nursing homes. We work according to EN norms stating that if laundry is being processed in house, there should be a separate soiled and clean linen area.



## PHARMACEUTICAL & FOOD INDUSTRY

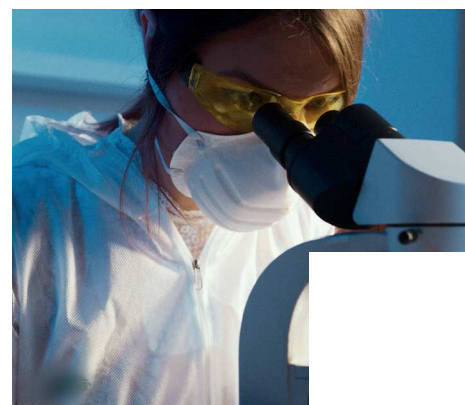
---

MANUAL OF ACCREDITATION: GFL - REFERENCE 004

### Best Industry standards:

Industries are leading safety and quality processes; we study and comply with standards that specify that the laundry function is organised to process the linen treatment by highly demanding procedures.

- Separation of soiled and clean linen must be ensured during transport.
- The linen treatment is the object of protocols and evaluations.
- The employees of the laundry have been trained in the hygiene rules applying to linen.
- Process controls are reviewed regularly.



# PRIMUS CAN CONSULT OVER THE WHOLE PROCESS

## PRIMUS HYGIENIC SYSTEM PROVIDES A TOTAL SOLUTION



### COLLECTING AND SORTING

The presorting of the laundry is completed by the collector staff and the different wash loads separated in wash types, by staff wearing mask, special workwear and using gloves for protection.



### TROLLEY STORAGE

Shortest storage time should be applied up to a maximum of 48 hours. Trolleys have to be clean before each use. Specific room with lower air pressure, washing station and floor U-bend should be used.



### WASHING

Wash loads of the same type are processed together to avoid handling of the soiled or clean laundry. The Primus Trace-tech® system controls: Temperature, Mechanical action, Time, Water level and Chemicals and thus ensure the optimal wash quality.



### FINISHING

Handling of the clean laundry is completed by staff who have used best handling process with minimum contact to avoid the contamination of the laundry.



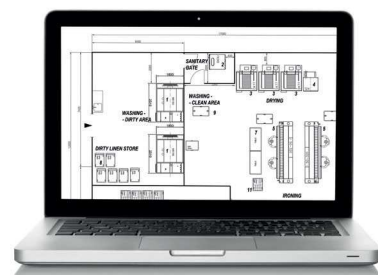
### CLEAN LINEN STORAGE

Store directly after processing - cover with plastic film / in closed cabinets  
- clean room and trolleys regularly  
- respect separated flows between clean and soiled linen.

## PRIMUS ACCOMPANIES YOU IN YOUR PROJECT

Our team of specialized advisors, experienced designers, and Primus certified partners are ready to assist you in the realization of your project, helping you to meet your specific requirements and bringing you:

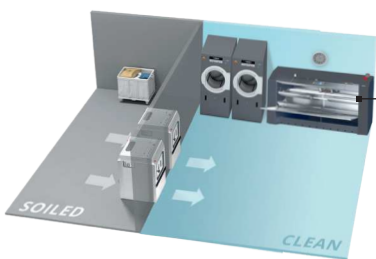
1. An audit of your laundry
2. The definition of needs
3. The technical drawing with energy reservations
4. The installation and maintenance of the machines
5. The training of the technical staff and users





# THE PRIMUS TOOLS THAT GIVE YOU MORE CONTROL

PRIMUS HYGIENIC SYSTEM PROVIDES A TOTAL SOLUTION



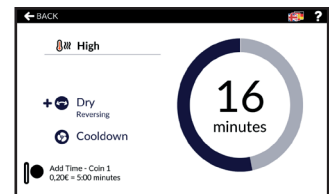
The Trace-tech® management software provides record of each wash load which allows you to ensure conformity with Hygienic standards. This can be stored and recalled whenever necessary. Parameters are continually controlled and stored to bring you a detailed report of the washing process. You are also informed if the machine can not complete required process.



Together with Optiload® and Trace-tech®, the Sample's tap ensures you have complete control and traceability of your washing and disinfection process.



Whilst loading your machine, the control display the weight of wash load. The machine will then adjust the water and energy consumption to suit to load and secure compliance with RABC standard. Thus, you have a guaranteed wash result, reduced energy consumption, so optimising productivity, and controlling of your operating costs.



Primus controls offer a complete freedom for programming. This is the guarantee for you to optimize and adapt the process at any time and to ensure the easy integration of new washing methods and soaps.



XControl+ user interface offers unlimited programming possibilities for laundry professionals. A USB plug for fast and easy uploading of new washing programs is available.

# 1 PRIMCARE ENTRY PACK

FOR A GOOD LAUNDRY PRACTICE FOUNDATION

Improve the quality of your linen and save time and costs with the Primcare Entry Pack. This solution enables you to **streamline the laundry process**. Your staff will be able to **save time** because the logistical process is very short: the laundry is just

around the corner. No more worries about linen stocks: your staff always has the right stock at their disposal. Moreover, you have the possibility to influence the entire process and benefit from the **lowest cycle cost**.



# 2 PRIMCARE HYGIENE CONTROL PACK

FOR TOTAL SAFETY

The Primcare Hygiene Control Pack ensures you stay on top of the laundry process. This solution focuses on **ultimate safety for patients, and staff** handling linen. Thanks to the innovative barrier

concept, it is almost impossible to mix clean and dirty linen thus ensuring an exceptional level of hygiene for your linen. Train your staff on how to achieve the best possible result and **increase your laundry throughput** by making best use of our innovative machine features, all while improving the quality of your linen.



# 3 PRIMCARE ULTIMATE CONTROL PACK

FOR ULTIMATE CONTROL

**Follow every detail** of the entire laundry process with the Primcare Ultimate Control Pack. **Monitoring and reporting** features track all steps

in the process, from washing, to drying and ironing. This actionable data enables you to optimize your laundry for **maximum efficiency and profitability**.



# I-TRACE & TRACE-TECH FOR OPL

## TRACE-TECH® LAUNDRY MANAGEMENT SYSTEM.

Available with **XControl+** and **XControl FLEX PLUS**

Trace-Tech® is our proven track-and-trace system: Trace-Tech® allows full quality control by providing records and statistics for each wash load enabling tracking of washing cycles and personalised programming to find the perfect cycle for your needs.

With Trace-Tech®, your laundry managers will get the highest level of control on their laundry process to copy and edit wash programs, as well as to get complete reports about their laundry and the performance of their equipment.



Additionally, Trace-Tech® is a preferred system to ensure the best traceability and hygiene level in your laundry: monitor water levels, temperatures, consumptions, and timings at every moment of your cycles. Because Trace-Tech® is connected to your equipment, you will access your data anytime.

i-TRACE®



## I-TRACE® YOUR ADVANCED CLOUD-BASED TRACE-TECH SYSTEM, ENRICHED WITH BUSINESS FEATURES.

Exclusively available with **XControl FLEX PLUS**

The new generation of software i-Trace® for business and laundry process management includes all the features and benefits from our previous generation software Trace-Tech®. Additionally, i-Trace® brings in new business management features including dashboards to monitor the working shift efficiency, costs/kg, cost/shift, automated maintenance reports, and more.

With i-Trace® you will get more. By using OTA technology, your equipment is connected through wifi, so this cloud-based software will push alerts for maintenance and give you remote control, and full access to your data anytime, from anywhere.

This is a game-changing asset for the daily management, process optimization and maintenance of multiple laundry installations process.

# FXB RANGE

## FXB 180

18KG  
40LB

## FXB 240

24KG  
53LB

## FXB 280

28KG  
62LB



FXB180

### PRODUCT FEATURES

- Freestanding, high spin
- Complete stainless steel cabinet
- XControl FLEX PLUS - Multilingual 7" touch screen platform
- Stainless steel drum and tub
- Large drain valve (Ø 76 mm)
- Easy access to all parts
- Large door opening for easy loading & unloading
- Automatic door positioning
- Easy Soap - liquid soaps connection
- External lubrication system
- Patented inner door lock

# MXB RANGE

## MXB 360\*

36KG  
79LB

## MXB 500\*

50KG  
110LB

## MXB 700

70KG  
154LB



MXB 360-500

### PRODUCT FEATURES

- Freestanding, high spin
- 2x large drain valves (Ø 76 mm)
- Easy access to all parts
- Frequency controlled motor
- Large door opening for easy loading and unloading
- XControl FLEX PLUS - Multilingual 7" touch screen platform
- Freely programmable
- Soap dispenser with 5 removable compartments
- Patented Cascade drum
- RS485 & USB plug
- Designed with focus on ergonomics
- Golden lock - patented inner door lock mechanism
- Easy Soap - liquid soaps connection
- Available as Pullman

# MB RANGE

## MB 70

26KG  
60LB

## MB 90

32KG  
75LB

## MB 110

110KG  
242LB

## MB 140

140KG  
308LB

## MB 180

180KG  
396LB



MB110

### PRODUCT FEATURES

- Freestanding, high spin
- Large drain valve (Ø 126 mm)
- Stainless steel cabinet (AISI 304)
- Stainless steel drum and tub
- Graphitronic® - graphic display
- Multilingual microprocessor
- Freely programmable
- Soap dispenser with 5 removable compartment
- Standard Pullman drum on MB70, 90 optional MB110
- Standard Y-pocket (3 pockets) drum on MB110, 140, 180
- Air-operated water inlets

# T RANGE

T11



|                          |                             |  |                             |                            |
|--------------------------|-----------------------------|--|-----------------------------|----------------------------|
| <b>T9</b><br>9KG<br>20LB | <b>T11*</b><br>11KG<br>27LB | <b>T13*</b><br><b>TAMS13</b><br>13KG<br>20LB | <b>T16*</b><br>16KG<br>35LB | <b>T24</b><br>24KG<br>53LB |
|--------------------------|-----------------------------|--|-----------------------------|----------------------------|

## PRODUCT FEATURES

- Easy to use microprocessor
- RADAX® concept - combination of radial and axial airflow (except T24-T35)
- Large door opening for easy loading and unloading

|                                       |                            |
|---------------------------------------|----------------------------|
| <b>T13/13</b><br>2 X 13KG<br>2 X 27LB | <b>T35</b><br>35KG<br>77LB |
|---------------------------------------|----------------------------|

\*HP - Heat Pump

# DX RANGE

DX55



|                              |                              |                              |
|------------------------------|------------------------------|------------------------------|
| <b>DX 13</b><br>13KG<br>30LB | <b>DX 24</b><br>24KG<br>55LB | <b>DX 34</b><br>34KG<br>75LB |
|------------------------------|------------------------------|------------------------------|

## PRODUCT FEATURES

- Radial airflow
- Full microprocessor
- Reversing drum
- Self-cleaning lint screen
- Preheating of intake air
- Large door opening
- Stainless steel drum

|                               |                               |                               |
|-------------------------------|-------------------------------|-------------------------------|
| <b>DX 55</b><br>55KG<br>120LB | <b>DX 77</b><br>77KG<br>170LB | <b>DX 90</b><br>90KG<br>200LB |
|-------------------------------|-------------------------------|-------------------------------|

# TAKE CONTROL OF YOUR LAUNDRY WITH PRIMUS INNOVATIONS

# I LINE RANGE

|                         |                         |                         |                         |                         |                         |                         |                         |
|-------------------------|-------------------------|-------------------------|-------------------------|-------------------------|-------------------------|-------------------------|-------------------------|
| <b>I25-100</b><br>250MM | <b>I25-120</b><br>250MM | <b>I25-140</b><br>250MM | <b>I30-160</b><br>300MM | <b>I30-200</b><br>300MM | <b>I33-160</b><br>320MM | <b>I33-200</b><br>320MM | <b>I50-160</b><br>500MM |
| <b>I50-200</b><br>500MM | <b>I50-250</b><br>500MM | <b>I50-320</b><br>500MM | <b>I80-320</b><br>800MM |                         |                         |                         |                         |

## PRODUCT FEATURES

- Standard finger guard protection
- Reduced number of mechanical and moving parts for a lower maintenance cost
- Long-life heating elements
- Optional foot pedal for easy start and stop operation
- Available with XControl FLEX PLUS - Multilingual 7" touch screen platform (Only for I/IR/IF50)
- Homogeneous ironing pressure to ensure top ironing quality
- Built-in large laundry box
- Standard M-Aramide top cover sheet
- Space saving installation against the wall is possible - front return



IF50 with XControl FLEX PLUS

For Industrial high productivity cylinder, chest type single or multi-rolls flatwork ironers range and feeding, folding stacking units, see Primus range brochure

#### WORLDWIDE HEADQUARTERS

Alliance Laundry Systems  
P.O. Box 990 Shepard Street  
Ripon, WI 54971, USA  
Phone: +1 920 748 3121  
Fax: +1 920 748 4564  
alliancelaudry.com

#### FRANCE

Alliance Laundry France  
3 rue Paul Rieupeyroux  
F-69800 Saint Priest, France  
Phone: +33 (0)4 78 79 55 75  
Fax: +33 (0)4 72 04 62 72

#### ITALY

Alliance Laundry Italy SRL  
73, Via Triumplina  
25123 Brescia (BS), Italy  
Phone: +39 (0)30 2091006  
Fax: +39 (0)30 2000239

#### SPAIN

Alliance Laundry Systems Spain  
C/ Solsones, 2  
08820 - El Prat de Llobregat  
Barcelona, Spain  
Phone: +34 93 479 54 10  
Fax: +34 93 379 18 76

#### CZECH REPUBLIC

Alliance Laundry CE  
Místecká 1116  
Příbor, 742 58, Czech Republic  
Phone: +420 556 768 800  
Fax: +420 556 768 882

#### BRASIL

Alliance Laundry Systems Brasil  
Edifício Office Design Berrini  
Avenida Luis Carlos Berrini,  
1748 Sala 2106  
São Paulo- SP, 04571-000, Brasil  
Phone: +55 (11) 5505-2917  
Phone: +55 (11) 5102-2938

#### CHINA

Alliance Laundry Machinery  
Commercial And Trading  
Shanghai Co., Ltd.  
Room 101 A, 1st Floor, No.1 Building  
NO.888 Lane Tianlin Road  
Min Hang District, Shanghai, China  
Post code: 200233  
Phone: +86 21 33375288  
Fax: +86 21 64227933

#### U.A.E.

Alliance Laundry BVBA  
(Dubai Branch)  
The Curve Building  
Showroom GS-08  
P.O. Box 393291  
Al Quoz 3  
Dubai, U.A.E.  
Phone: +971 4 347 4136  
Phone: +971 4 347 4137  
Fax: +971 4 347 4180

#### THAILAND

Shophouse No. SH04-03, 103  
North-South Road,  
Sala Urban Area, An Loi Dong Ward,  
District 2, Ho Chi Minh, Vietnam  
Tel: +84 936 072 268