

## INDUSTRIAL TUMBLE DRYER - HEAT PUMP

TX  
RANGE

TX9 HP

9 KG

20LB



### FEATURES

- Standard stainless steel drum
- Anthracite grey skin plate
- Inox top panel
- Easy-to-use microprocessor (ECT)
- Axial airflow
- 210° door opening for easy loading and unloading
- Heat pump unit easy accessible from the front
- Intuitive control with simple selection and 3 programs
- Triple filtration system
- Optimized 0.65m<sup>2</sup> footprint to install anywhere

### OPTIONS

- Stainless steel front panel
- Reverse drum
- Coin operated version



STANDARD  
STAINLESS STEEL  
DRUM

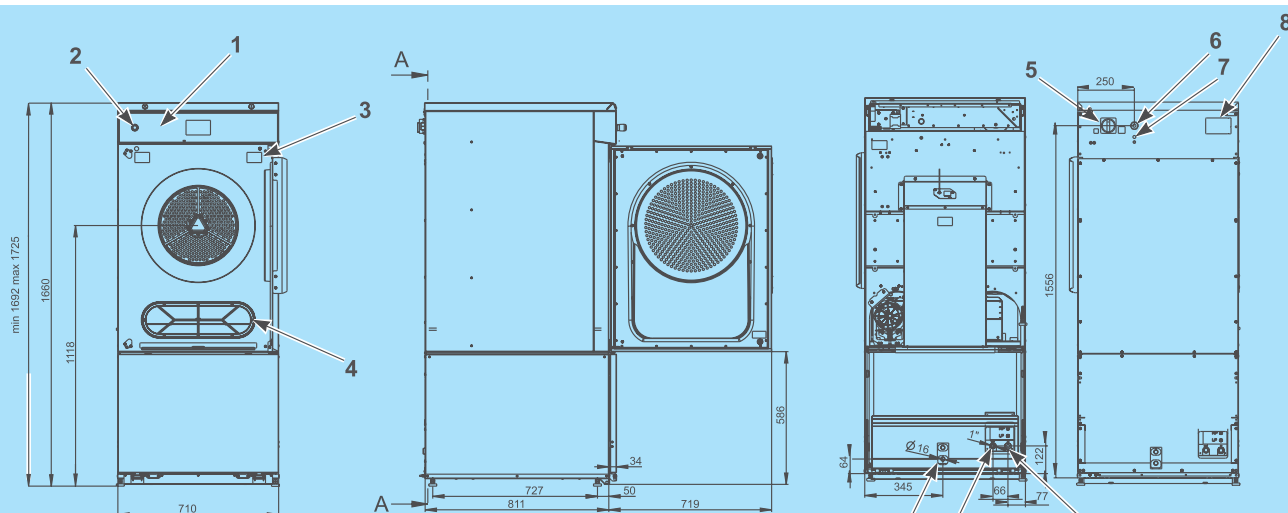


HEAT PUMP



ENERGY  
EFFICIENT

TYPE		TX9 HP
<b>CAPACITY</b>		
Capacity 1:18	kg (lb)	11(24)
Capacity 1:22	kg (lb)	9(20)
Drum volume	l	195
Drum diameter	mm	Ø 670
Drum depth	mm	555
<b>DOOR</b>		
Door opening	mm	Ø 500
Opening direction		Right (reversible)
Door opening angle		210°
<b>DRYING PERFORMANCE</b>		
Airflow type		Axial
Airflow	m3/h	--
<b>HEATING</b>		
Heating type		Heat pump
Heating power	kW	1,5
Total power supply	kW	2
Electrical connection		3x220-230V 50Hz 3x380-415V+N 50Hz
<b>MOTOR</b>		
Fan	kW	0,17
Drive	kW	0,25
<b>CONNECTION</b>		
Water valve connection		2x $\frac{3}{4}$ "
Condensate drain	mm	16
<b>PROGRAMMER</b>		
		Easy Control
<b>NOISE</b>		
Drying sequence	db	55
<b>DIMENSIONS</b>		
H×W×D	mm	1725x710x925
Net weight	kg	193
<b>TRANSPORT DATA</b>		
Packed H×W×D	mm	1815x752x970
Gross weight	kg	208



- |                          |                     |
|--------------------------|---------------------|
| 1. Control panel         | 7. Serial plate     |
| 2. Emergency stop button | 8. Condensate drain |
| 3. Lint screen           | 9. Water outlet     |
| 4. Door switch           | 10. Water inlet     |
| 5. Main switch           |                     |
| 6. Main power supply     |                     |