

HIGHLY EFFICIENT SOFT MOUNTED WASHER EXTRACTORS



**FX
RANGE**

FX350	FX450	FX600
35KG 77LB	45KG 99LB	60KG 132LB



FEATURES

- Freestanding, high spin
- Patented Cascade Drum™
- Stainless steel drum and tub
- 2x large drain valves (Ø 76 mm)
- Easy Soap™ - liquid soaps connection
- Large door opening for easy loading/unloading
- Ergonomic height of door enables easy access with trolleys
- RS485 plug (on the back panel)
- User Friendly control position regardless of the user's height
- Bumper (front side protection)
- Soap hopper

XCONTROL FLEX PLUS PLATFORM

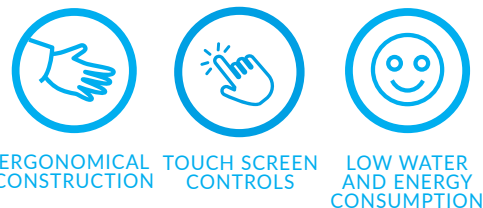
- 7" Touch intuitive programmer
- Available in 34 languages
- Factory built wifi for programming and updating
- Service alerts for easy maintenance
- Fully programmable
- 20 preset programs, up to 99 in memory
- Combine with Trace-Tech™ and i-Trace laundry management softwares for a perfect control of your laundry installation.

OPTIONS

- Stainless steel front
- Liquid soap pumps
- Recycle valve
- 3rd water inlet, high inlets capacity
- Steam or Dual heat versions
- Air operated water inlets
- OPTILOAD™ - weighing system*
- Water sample tap
- Extra signaling (orange light & horn)
- Insulation for energy and noise reduction
- Forward tilting (n/a for FX350)*
- Extension up to 16 liquid soap signals (accessory)



XControl FLEX PLUS approach, program, and cycle screens

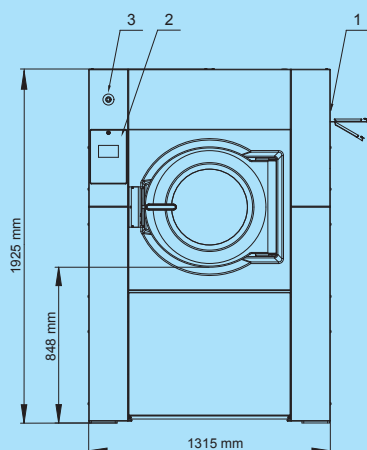


*Consult your sales representative for availability

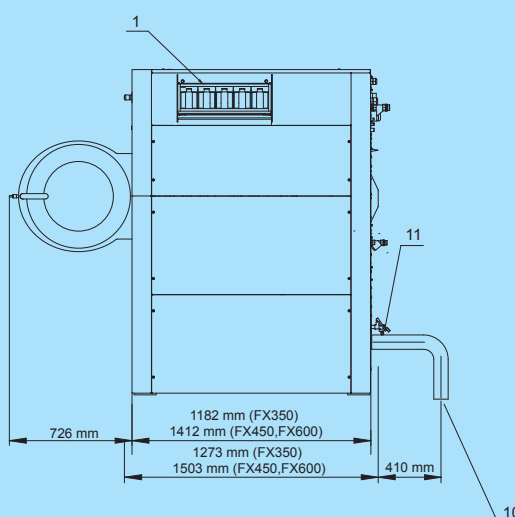
GET AHEAD IN LAUNDRY

TYPE		FX350	FX450	FX600
INNER DRUM				
Capacity 1:10	kg /lb	35/77	45/99	60/132
Capacity 1:9	kg /lb	39/86	50/110	67/148
Volume	litres	351	452	601
Diameter	mm	914	914	1035
DRUM SPEED				
Wash speed (max)	rpm	38	38	36
Extraction speed (max)	rpm	839	839	788
G-FACTOR				
		360	360	360
HEATING				
Electricity	kW	24	36	54
Steam	bar	3-8	3-8	3-8
Hot water	°C	90	90	90
Sound pressure level	dB (A)	<75	<75	<75
Water valves connection	BSP	1"	1"	1"
Water pressure	kPa	100-800	100-800	100-800
Rec. water pressure	kPa	300-500	300-500	300-500
Water inlet capacity (at 8 bar)	l/min	518	518	518
Drain valve	outer Ø mm	2x76	2x76	2x76
Flow amount with drain valve	l/min	2x 210	2x 210	2x 210
Steam valve connection	BSP	3/4"	3/4"	3/4"
Steam pressure	kPa	300-800	300-800	300-800
DIMENSIONS				
Size H×W×D	mm	1925x1315x1270	1925x1315x1502	1925x1315x1502
Net weight	kg	1010	1350	1500
TRANSPORT DATA				
Packed H×W×D	mm	2125x1425x1470	2125x1425x1700	2125x1425x1700
Gross weight	kg	1170	1490	1640

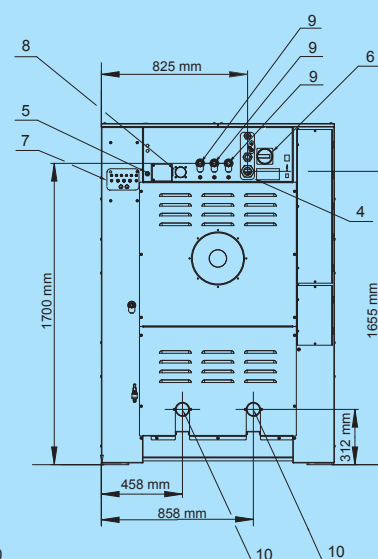
Front side



Left side



Rear side



- 1 Soap hopper
- 2 Keyboard
- 3 Emergency stop
- 4 Electrical connection

- 5 Electrical connection to liquid soap
- 6 Main switch
- 7 Liquid soap pump connections

- 8 Air vent tub
- 9 Water connection
- 10 Drain valve
- 11 Water Sample Tap

The Primus preserves the right to change the machines and the specification in this leaflet at any time, without prior notice. Details and photographs are only for information and never binding.

www.primuslaundry.com



Primus by Alliance Laundry Systems